

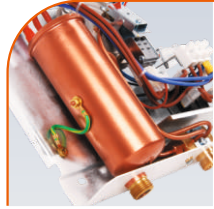
Electric instantaneous water heater

EPO Amicus

Water heater that can be installed above or under the kitchen sink



Most important advantages



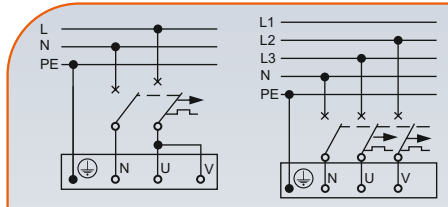
Copper shielded heating elements
Reliable technology ensures long life, resistance to water decay and air bubbles.



Included in the set **finstream spray-head** guarantees comfortable use and savings on water and energy up to 50%.

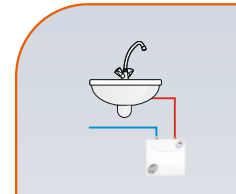


Regulating valve allows for setting comfortable temperature at a maximum possible flow of water.

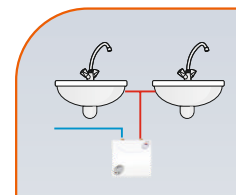


The heating box consists of 2 heating elements, which can be connected to 1 phase 230V ~ or to 2 phases of 3 phase installation 400V 2N ~.

Application

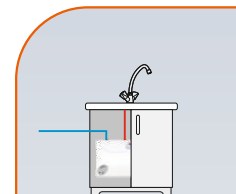


from 4kW

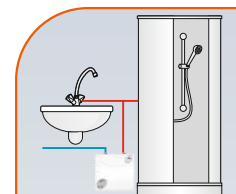


from 4kW*

* Allows to use one tap at a time.



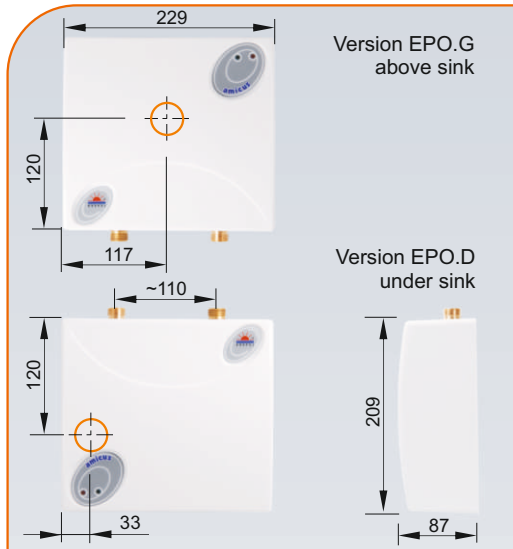
6kW



6kW

* Allows to use one tap at a time. Recommended use of a fine-stream shower head.

Dimensions



Version EPO.G
above sink

Version EPO.D
under sink

Supply water pressure 0,12 - 0,6 MPa
Inlet and outlet section 1/2" outer thread
Safety class IP 24

Technical data

Type	Rated power	Rated voltage	Rated current (A)	Min. connecting wires section (mm ²)	Efficiency (Δt=30°) (l/min.)
EPO.D-4 AMICUS	4 kW	230V~	17,4 / *8,7	3 x 2,5 / *4 x 1,5	1,9
EPO.D-5 AMICUS	5 kW	230V~	21,7 / *10,9	3 x 2,5 / *4 x 1,5	2,4
EPO.D-6 AMICUS	6 kW	230V~	26,1 / *13,0	3 x 4 / *4 x 2,5	2,9
EPO.G-4 AMICUS	4 kW	230V~	17,4 / *8,7	3 x 2,5 / *4 x 1,5	1,9
EPO.G-5 AMICUS	5 kW	230V~	21,7 / *10,9	3 x 2,5 / *4 x 1,5	2,4
EPO.G-6 AMICUS	6 kW	230V~	26,1 / *13,0	3 x 4 / *4 x 2,5	2,9

All technical data is based on standards of Central European countries. However, Kospel S.A. is fully flexible to adjust its appliances to other standards.

* values for 400V 2N